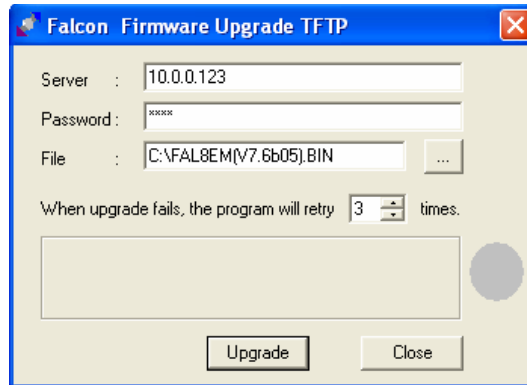


HOW TO UPDATE FALCON FIRMWARE USING RLE TFTP

MODELS: FMS-X/FMS-XXXX Series, F3400, F1000, FMS8, FMS20, FMS20U, FMS32, FLS8, and FLS8-M

1. Download the RLE TFTP Program and latest firmware file for your specific Falcon Model from the webpage for that model on our website www.rletech.com.
2. Erase the backup firmware from the Falcon.
 - a. Navigate to the Flash Program configuration page under the Configuration menu in the Falcon.
 - b. Click on the button, Erase Backup, to erase the backup firmware file in the Falcon.
3. Run rle-tftp.exe from its installed/downloaded location.
4. Configure the program window for upload.
 - a. For **Server**, enter the IP address of the Falcon to be upgraded.
 - b. For **Password**, enter the password for the Administrator login for the Falcon.
 - c. For **File**, enter the location of the Firmware file being uploaded.
 - d. Enter 3 for the number of retries.



5. Click Upgrade to begin uploading to the Falcon, this may take a few seconds to begin uploading.
6. Once complete, an “upgraded successfully” message will appear confirming that your new firmware is uploaded.
 - a. The Falcon will now reboot with the newly installed firmware.
 - b. To upgrade the second copy of firmware, repeat steps 2 through with the second copy of firmware.

